

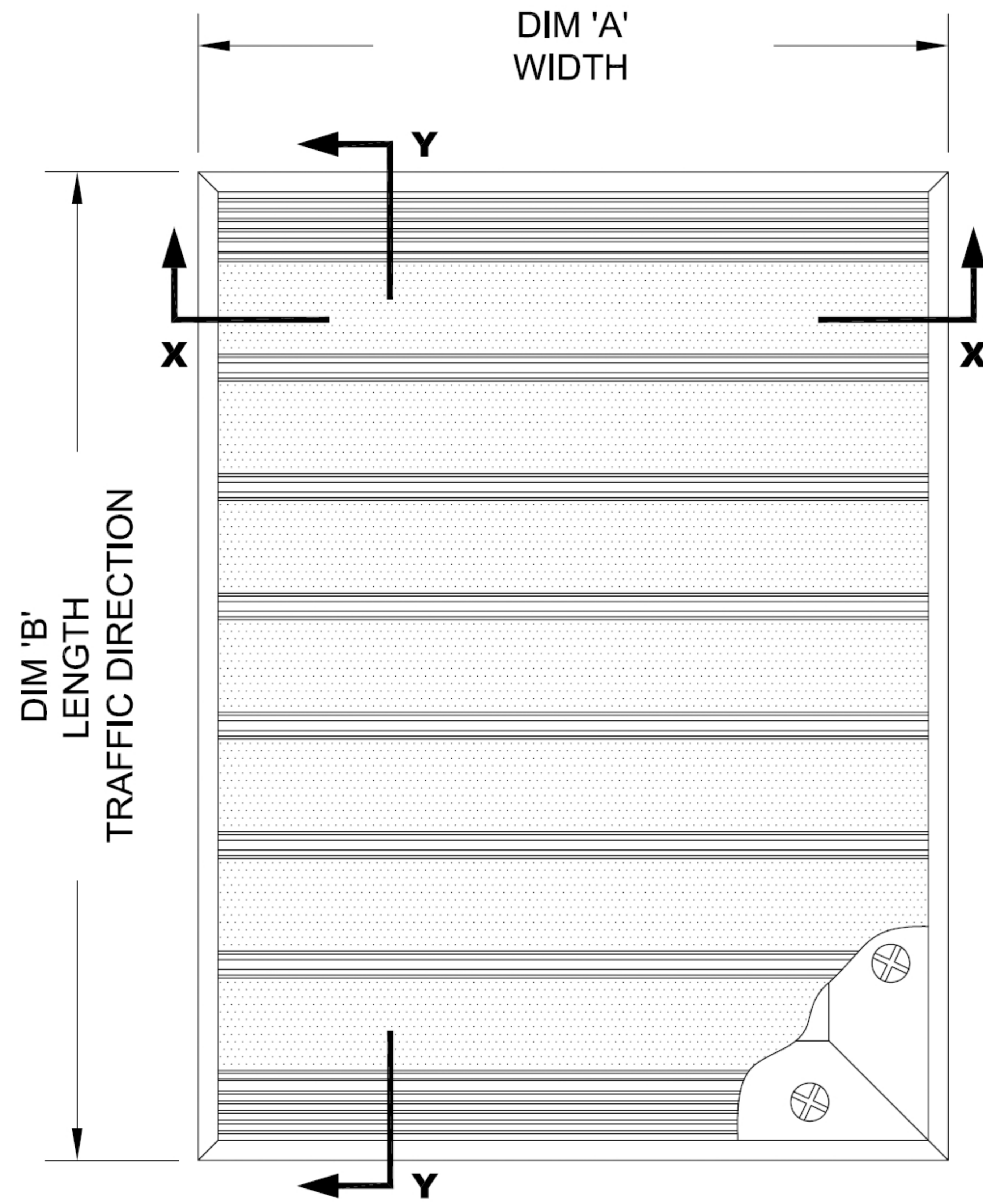
WITH LEVEL BASE FRAME

INSERT STYLE: INSERT COLOR: CATALOG NUMBER: G3 PART NUMBER:

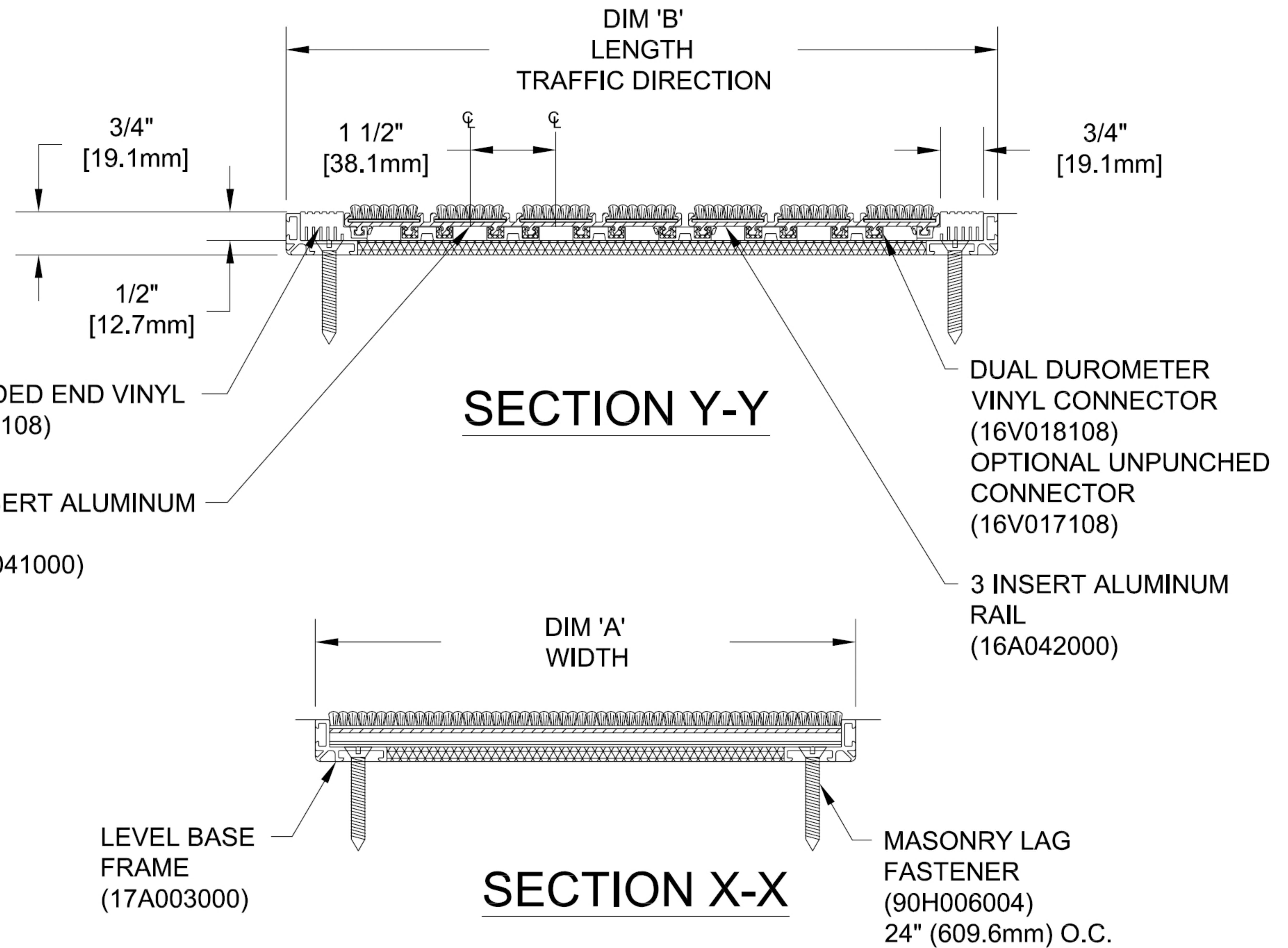
NO.	REVISION	DATE	BY
NO.	F&F RELEASE	DATE	BY

- | | | | | | | |
|---|---|---|---|---|---|---|
|  |  |  |  |  |  |  |
| EXTERIOR CARPET
G3EC
19C005XXX | HEAVY-DUTY CARPET
G3HC
19C010XXX | CARPET
G3CP
19C008XXX | VINYL
G3V
19V002XXX | VINYL-ABRASIVE
G3VA
19A003XXX | SERRATED ALUM. INSERT
G3SAI
19A001XXX | POURED ABRASIVE INSERT
G3PA
19M002XXX |

INSERT STYLES



TYPICAL PLAN VIEW



NOTES:

- *ALL SURFACES IN CONTACT WITH MASONRY ARE TO RECEIVE A COAT OF ZINC CHROMATE PRIMER
- *PLEASE VERIFY TRAFFIC DIRECTION
- *PEDITRED LP SHALL BE ABLE TO SUPPORT A 750 LB. ROLLING LOAD. LARGER LOADING MAY BE ACCOMODATED. CONTACT SALES WITH SPECIFIC LOADING REQUIREMENTS.
- *MAX. SINGLE GRID SIZE NOT TO EXCEED 12'-0" (3.66M) IN WIDTH (DIM "A")
- *DUE TO 1-1/2" MODULE, INSIDE OF FRAME DIMENSION SHOULD BE CHANGED ONLY IN INCREMENTS OF 1-1/2" [38.10mm] TO AVOID THE USE OF EXTRUDED END VINYLs.
- *ADDITIONAL SPECIFICATIONS ARE CONTAINED IN THE LATEST CATALOG OR AT www.americanfloor mats.com AND ARE CONSIDERED PART OF THIS TRANSMITTAL.
- *SUPPLIED IN STANDARD MILL FINISH. (OPTIONAL FINISHES AVAILABLE AT ADDITIONAL COST)

American Floor Mats

AMERICAN FLOOR MATS

PLEASE VERIFY ALL	QTY	MARK #	LOCATION	MODEL	DIM 'A' WIDTH	DIM 'B' TRAFFIC DIR	FINISH	NOTES

PROJECT:		
LOCATION:		
CONTRACTOR:		
AGENT:		SHT:
DRG. BY:	DATE:	JOB NO.: